



This creative project was shared by the National Button Society.

BUTTON & CLOTHESPIN TRAIN OR VEHICLE

NBS encourages "no harm" button jewelry and crafting.
Buttons and buckles will not be damaged in the creative process.

TOOLS

- Needle nosed pliers (to hold small buttons & beads)
- (optional) Lo temp hot glue gun
- Short awl for loosening old threads or wires in buttons
- Paper scissors

FOR A FIVE-CAR TRAIN

- Five clothes pins
- Sixteen buttons of matching size for car wheels. The buttons you select for wheels will determine your color scheme.
- 2 larger buttons plus 6 smaller wheels for the locomotive
- Glue or a low temperature hot glue sticks
- Random buttons, wood beads, spools, etc. to decorate the train and form the cars and cargo
- Colored paper, markers or paint

TRAIN CARS

CARGO CAR WHEELS. You need four buttons of the same size for each cargo car. They can be sew through or have a shank. The wheels can be all the same color, or different colors and different designs. You decide what you want your train to become. Miss Joy made simple one-color trains and very colorful trains based on the buttons she chose.

When you glue the wheels onto the clothespin, be sure to glue them onto only the bottom piece of wood. If you glue to both pieces, then your clothespin won't open to grab the hitch and form a train!

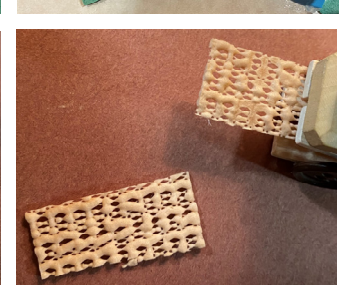
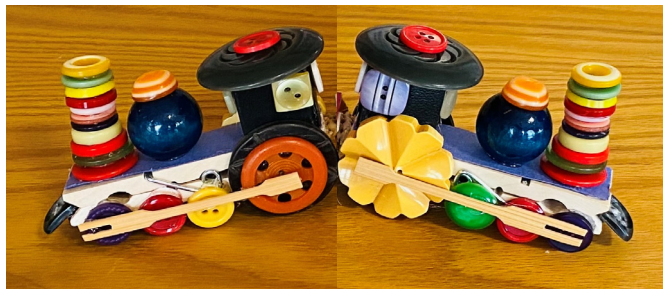
LOCOMOTIVE WHEELS.

For the locomotive, chose two large buttons and six medium to small buttons. Glue the three smaller buttons close together at the front of the train. Glue them onto only the lower wood piece of the clothespin. You can glue the big wheel onto the top piece of the wood, or both wood pieces if you don't want the locomotive clothespin to open.

Finally, glue two toothpicks or an appetizer wood fork side by side to be the rod from the big "pusher" to the small wheels.

HITCH. Cut strips of fabric $\frac{1}{2}$ "x1-1/2" Glue the fabric strips under the top leg of each train car except the caboose. Let 1" stick out as the hitch.

FLAT BED. If you want to have a color instead of the clothes pins for the train car flat bed cars, cut strips of paper or cloth as long and wide as the clothes pin. Or you could paint or draw on the clothes pins.





This creative project was shared by the National Button Society.

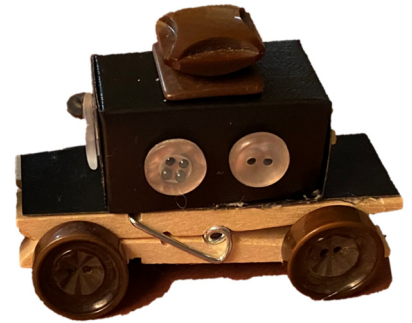
FLAT FREIGHT CAR

If the top of your clothespin train car is open, then it is called a flat car.

CABOOSE & LOCOMOTIVE CAB

You can form a box to be on your caboose car using the pattern included with this kit, and a square box for your locomotive cab.

Cut on the solid lines, fold on the dotted lines and then glue it together.



GONDOLA FREIGHT CAR

There is also a pattern to fold and cut an open-topped car that is called a gondola car.

OTHER VEHICLES

You can use the same ideas here to make cars and pickups and trucks and trailers!

