

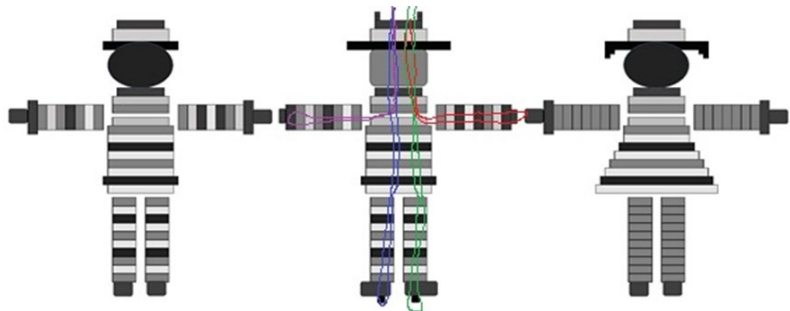


BUTTON DOLLS



WHAT YOU WILL NEED

- 40-46 small or medium buttons for arms and legs
- 9-13 medium or large buttons for the body and neck
- 2-4 buttons for the had
- 4 beads or shank buttons for the hands and feet
- 1 large bead for the head
- 42 inches of fine wire or heavy string



BUTTON CONSIDERATIONS

Button dolls can be as large or as small as you wish to make them, using two- or four-hole sew through buttons for the legs, arms and body. Hands and feet can be made from beads or buttons with shanks, depending upon the doll you wish to create.

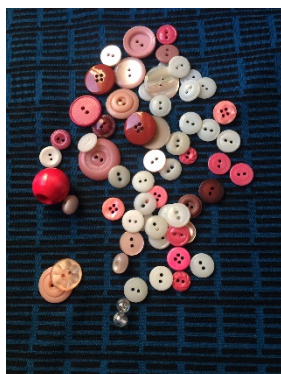
The buttons you select will give your doll its personality, and you can be as creative as you wish. A button doll body can be made from larger buttons, spools, bobbins or cylindrical objects.

The choice of string or wire to construct your doll will result in a doll that is flexible and limp, or that can be “posed” by bending the legs and arms.

SAMPLE BUTTON SELECTION

Here is a sample for a potential doll.

BUTTON GROUP



SORTED BY SIZE



LAI D OUT

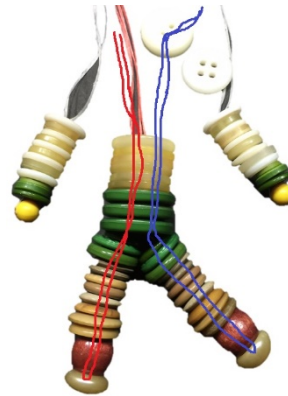




CREATING YOUR BUTTON DOLL

The basic doll is composed of two matching strands of buttons for the legs, and two matching strands of buttons for the arms, feeding the wire from the legs and arms through the body buttons.

LEGS: String a bead or shank button onto the center of a one-foot length of wire. Fold the wire at the bead and feed each end of the wire up through the buttons you have selected to be the doll legs. For a 4-5" button doll you will need about 9-12 small-medium buttons.



You can make your doll have knees by putting a bead at the center of the legs, or your doll can be wearing bell-bottom jeans if the buttons get smaller as they go away from the beginning bead.

ARMS: Construct the arms in the same way as the legs, using 9" wires and 7-10 small-medium buttons for each arm.



BODY: String the wires from one leg through one hole of 7-10 medium-large sized buttons, and next string the wires from the other leg up through the other hole of the 7-10 buttons. You now have the legs and body built. If your buttons are largest at the bottom, the doll will appear to have on a dress.



The reason the leg wires/strings have not been tied to a body button or into a know yet is for cosmetics. If a knot is made, it will hold your body buttons apart and potentially be visible.

Hold off until after the next step adding the arms and neck is completed.

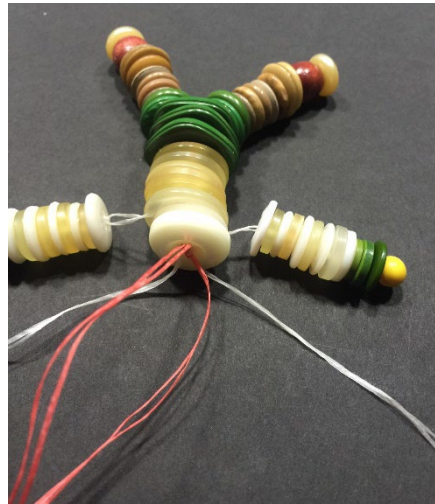




This creative project was shared by the National Button Society.



NECK & ARMS: String the leg wires from the top of the doll body and the wires from each arm through 2-3 more medium-large buttons. These which will be the doll neck and shoulders. You might want them one size smaller than the body or in descending size. If possible, its best if the top button has a “well” or dip in the center to accommodate the coming knots.



TIGHTENING UP THOSE ARMS & LEGS:

In this illustration, the pink strings were used to help you see the difference between arms and legs.

Now, pull the leg strings up firmly, tightening the buttons on the legs. Tie a knot.

Next, pull the arm strings to snug the arms to the body, and tie a knot to hold them in place.

HEAD & HAT: Using all eight wires, string on your large bead for the doll head.

Next separate the wires into sets of four and feed them through the 2-4 buttons you have selected for the doll's hat.



FINISH: You can form the wires above the hat into a loop or hook for hanging, or string them back down to the neck to tie off the ends, and cover the neck with a bow, bolero or tie. If you are not going to use the wires for a loop or hook, it might be easier to make your doll using heavy string.

